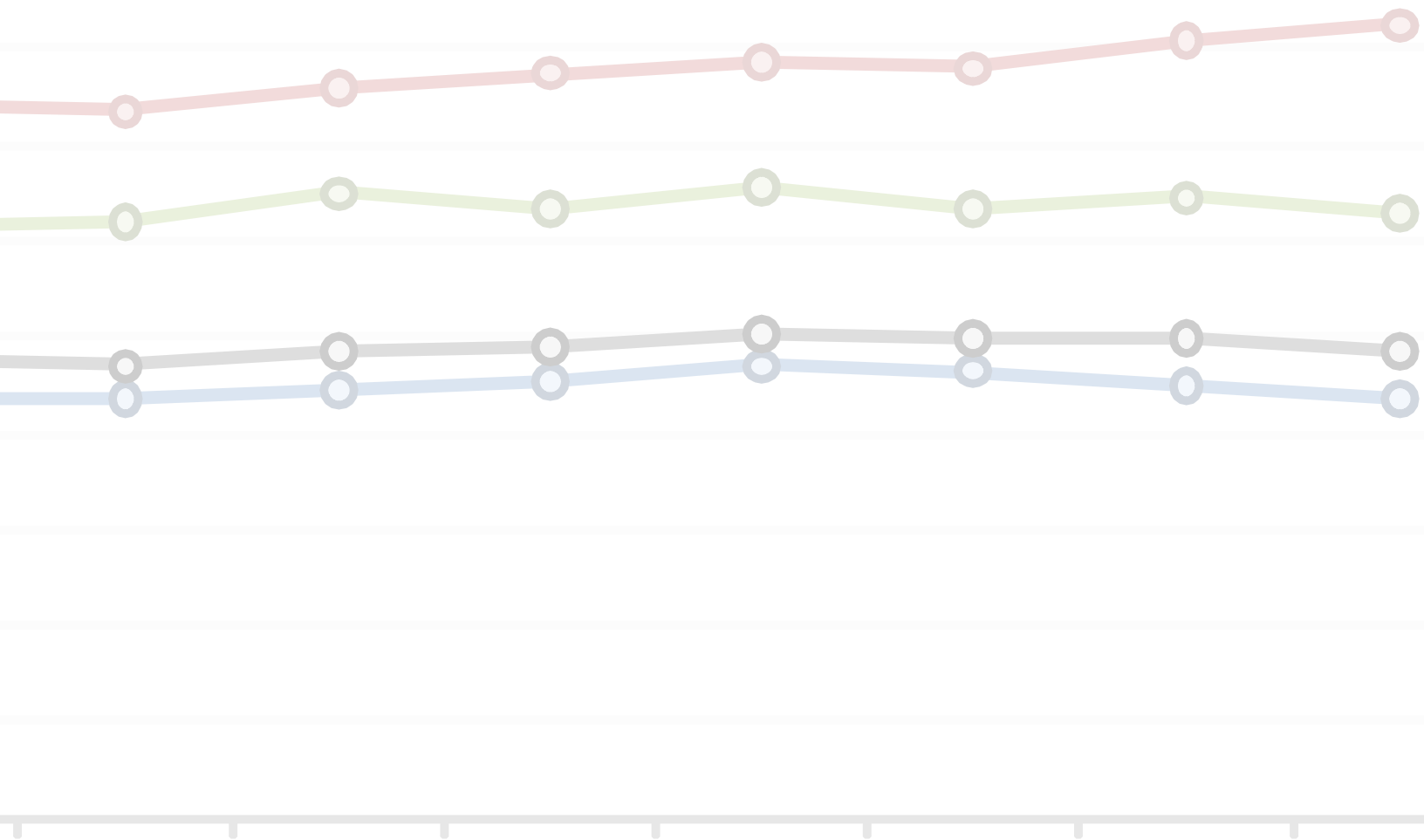




APRIL 2010

RACE-RECOVERY INDEX

IS STIMULUS HELPING COMMUNITIES IN CRISIS?



KIRWAN INSTITUTE

FOR THE STUDY OF RACE AND ETHNICITY

THE OHIO STATE UNIVERSITY

john a. powell
Executive Director

Andrew Grant-Thomas
Deputy Director

.....

KIRWAN INSTITUTE

The Kirwan Institute for the Study of Race and Ethnicity is a university-wide interdisciplinary research institute. We generate and support innovative analyses that improve understanding of the dynamics that underlie racial marginality and undermine full and fair democratic practices throughout Ohio, the United States, and the global community. Responsive to real-world needs, our work informs policies and practices that produce equitable changes in those dynamics.

.....

.....

STAFF CONTRIBUTORS

Matthew Martin, *GIS/Planning Specialist*

Jason Reece, *Senior Researcher*

.....

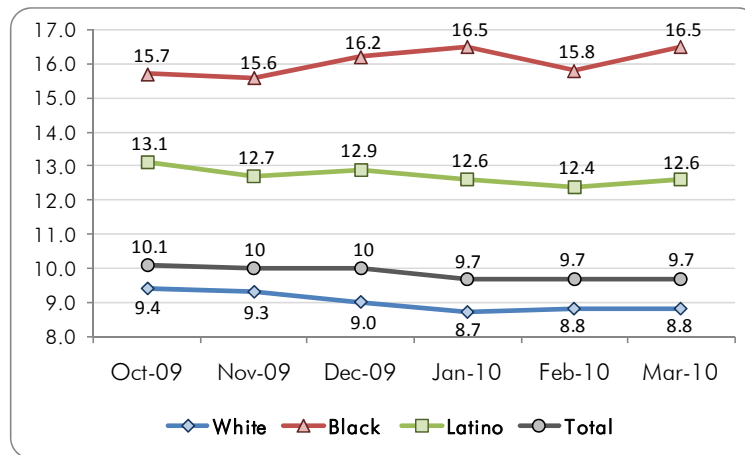


NATIONAL UNEMPLOYMENT

During March 2010 the overall national unemployment rate remained at 9.7% for the third month in a row, despite the fact that the economy added 162,000 non-farm employees. This was the result of more discouraged workers reentering the labor force to look for jobs once again, making the unemployment rate appear the same while jobs were in fact added for the month.

One of the most notable aspects of the employment situation is that while unemployment remained the same for most major age, race, and gender groups, the rate for Blacks (16.5% up from 15.8%), particularly Black men (19.0%), increased somewhat dramatically from February to March. This statistic has prompted some to begin asking how far off the charts Black unemployment will become before targeted measures are taken to alleviate the strain of the recession on this particular demographic?¹ This increase in Black unemployment from February 2010 to March 2010 represents the second similar jump in the past five months, as unemployment among people of color continues to soar beyond the rest of the U.S. job picture. **Chart 1** depicts recent trends in national unemployment by race, while **Charts 2 and 3** show a further demographic breakdown of recent trends.

Chart 1. National Unemployment by Race, by Month



Source: U.S. Bureau of Labor Statistics

Table 1. Unemployed Persons by Race (in thousands)

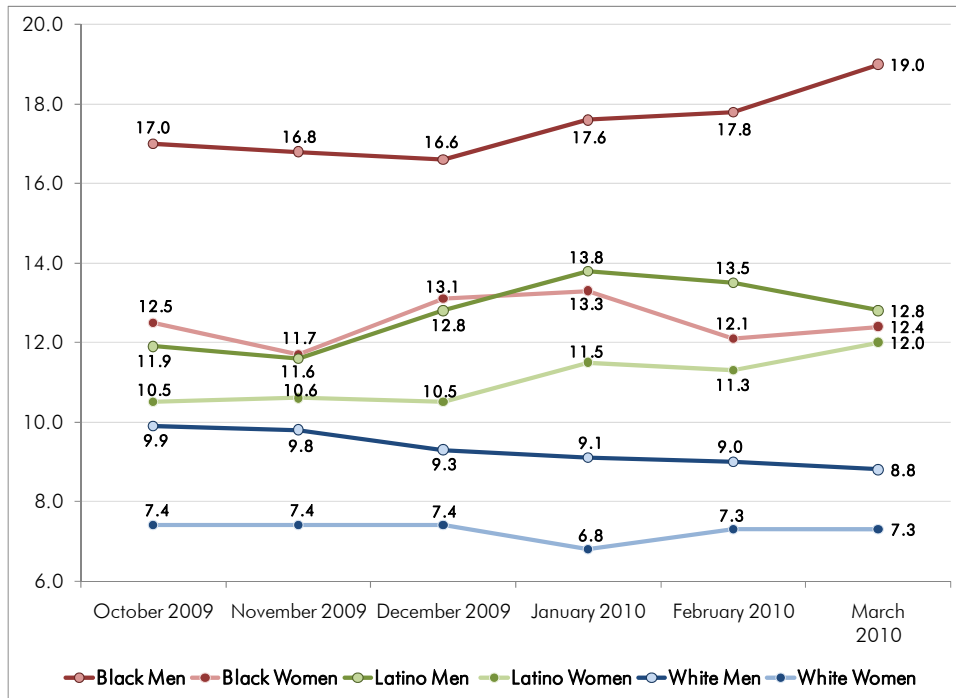
Race	Mar-09	Apr-09	May-09	Jun-09	Jul-09	Aug-09	Sep-09	Oct-09	Nov-09	Dec-09	Jan-10	Feb-10	Mar-10
White	9,996	10,213	10,874	10,986	10,927	11,254	11,366	11,813	11,589	11,266	10,782	10,982	10,945
Black	2,367	2,676	2,650	2,617	2,600	2,682	2,701	2,754	2,757	2,843	2,929	2,812	2,951
Latino	2,571	2,548	2,860	2,739	2,792	2,908	2,849	2,939	2,872	2,891	2,848	2,800	2,859
Total	13,310	13,816	14,518	14,721	14,534	14,993	15,159	15,612	15,340	15,267	14,837	14,871	16,755

Source: U.S. Bureau of Labor Statistics

¹ USA Today, 4/6/2010: [Obama Ignores Black Joblessness At His Own Peril](#)

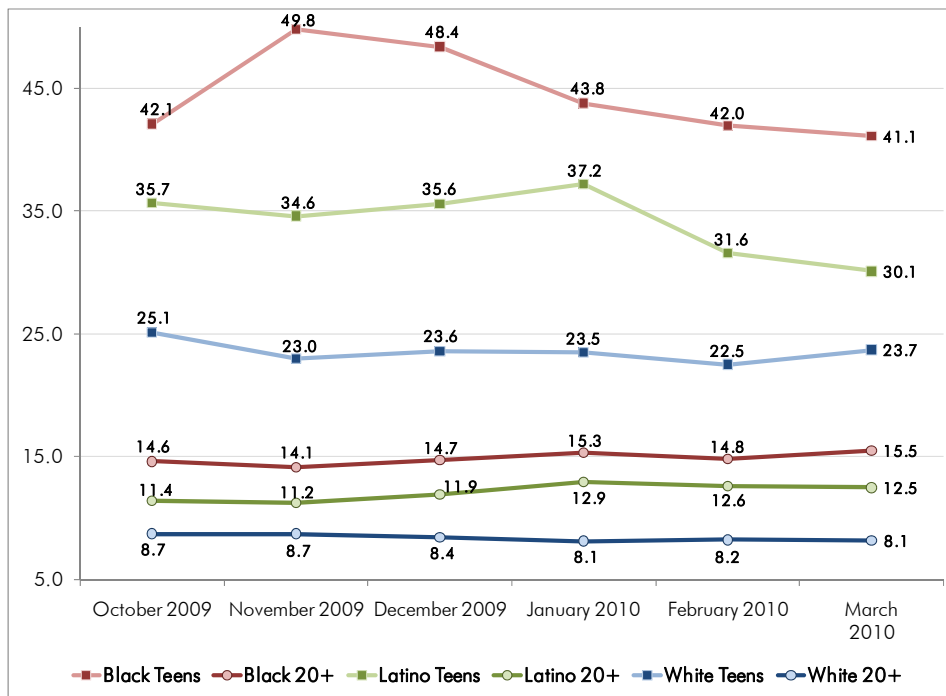


Chart 2. National Unemployment by Race & Gender, by Month



Source: U.S. Bureau of Labor Statistics

Chart 3. National Unemployment by Race & Age, by Month



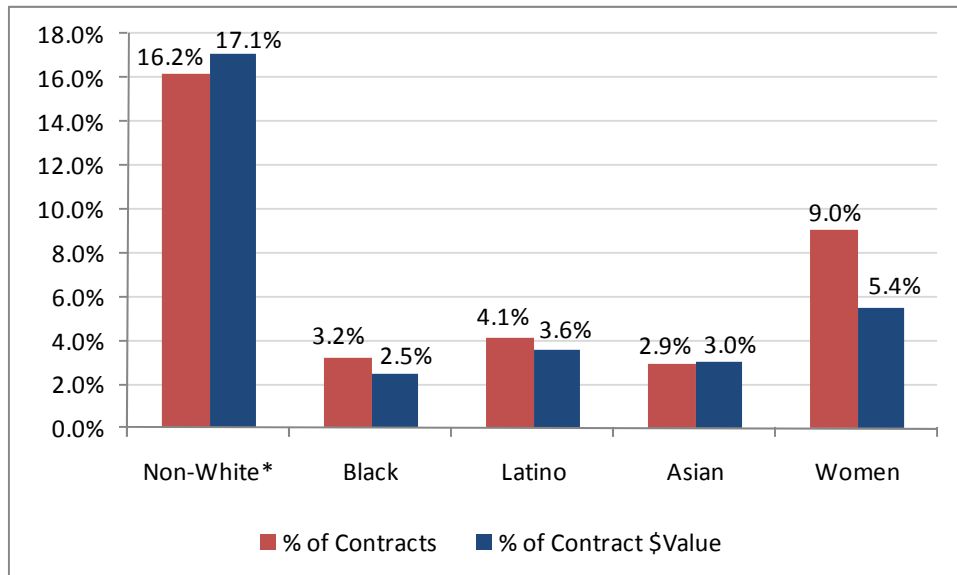
Source: U.S. Bureau of Labor Statistics



FEDERAL ARRA CONTRACT PROCUREMENT

As the Federal government continues to dole out Stimulus contracts, the participation of businesses owned by women and people of color has been a measure of how equitable America’s recovery is. One clear observation thus far has been that these marginalized businesses have been receiving a smaller share of the contracts and total contract value than the comparable share of all U.S. businesses that they represent.² Additionally, these businesses have been receiving smaller contracts than other firms (Chart 4), and each of these trends have remained constant throughout the unfolding of ARRA.

Chart 4. Federal ARRA Contract Procurement as of April 7, 2010



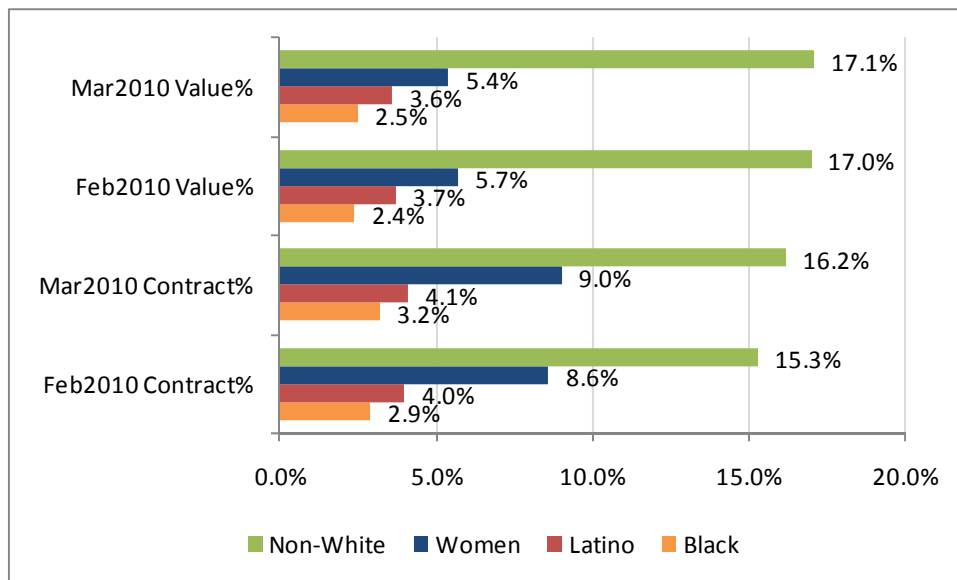
Source: Federal Procurement Data System (www.fpds.gov), Recovery Report

² Women-owned, Latino-owned, Black-owned, and Asian-owned businesses account for 28.2%, 6.8%, 5.2%, and 4.8% of all U.S. businesses respectively, according to the US Census Bureau, 2002 Economic Census Survey of Business Owners



However, a comparison with the numbers from the previous month show that the share of all ARRA contracts has increased for firms owned by Blacks, Latinos, Non-Whites, and Women. This may represent an effort to improve the equity of contract awarding (**Chart 5**). Businesses owned by Blacks and by all Non-Whites also saw an increase in the share of overall contract value, showing that these businesses are beginning to acquire larger contracts. While these trends must continue to be measured over several months, they may be a sign that at least some Federal agencies are moving towards a more inclusive recovery.

Chart 5. Change in Total Federal ARRA Contracting (During March 2010)



Source: Federal Procurement Data System (www.fpds.gov), Recovery Report

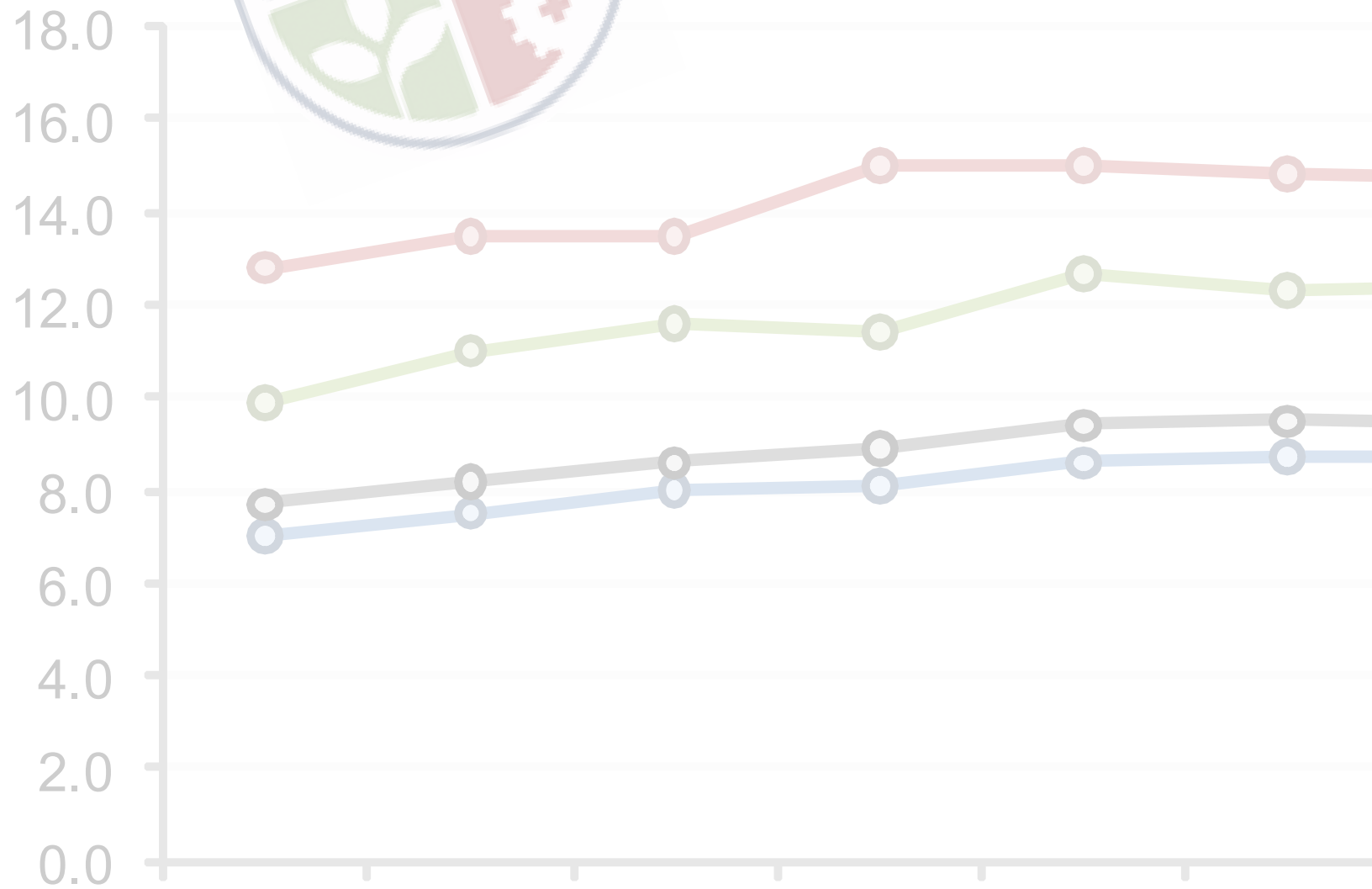
RACE-RECOVERY INDEX

The Race-Recovery Index, a project of the Kirwan Institute, is designed to measure how all people, but particularly marginalized populations, are faring in the midst of the national recovery efforts. The two primary tools for measurement that will be used on a monthly basis will be the national unemployment figures by race, and the Federal contract procurement of the American Recovery and Reinvestment Act of 2009 (ARRA). Additional forms of measurement may eventually be added. As new information becomes available, the Index will be updated accordingly and will include commentary about trends in the findings.

For more information, please visit:

www.fairrecovery.org

FairRecovery.org



KIRWAN INSTITUTE FOR THE STUDY OF RACE AND ETHNICITY

THE OHIO STATE UNIVERSITY

433 MENDENHALL LABORATORY | 125 SOUTH OVAL MALL | COLUMBUS OH 43210

Ph: 614.688.5429 | Fax: 614.688.5592

Website: www.kirwaninstitute.org