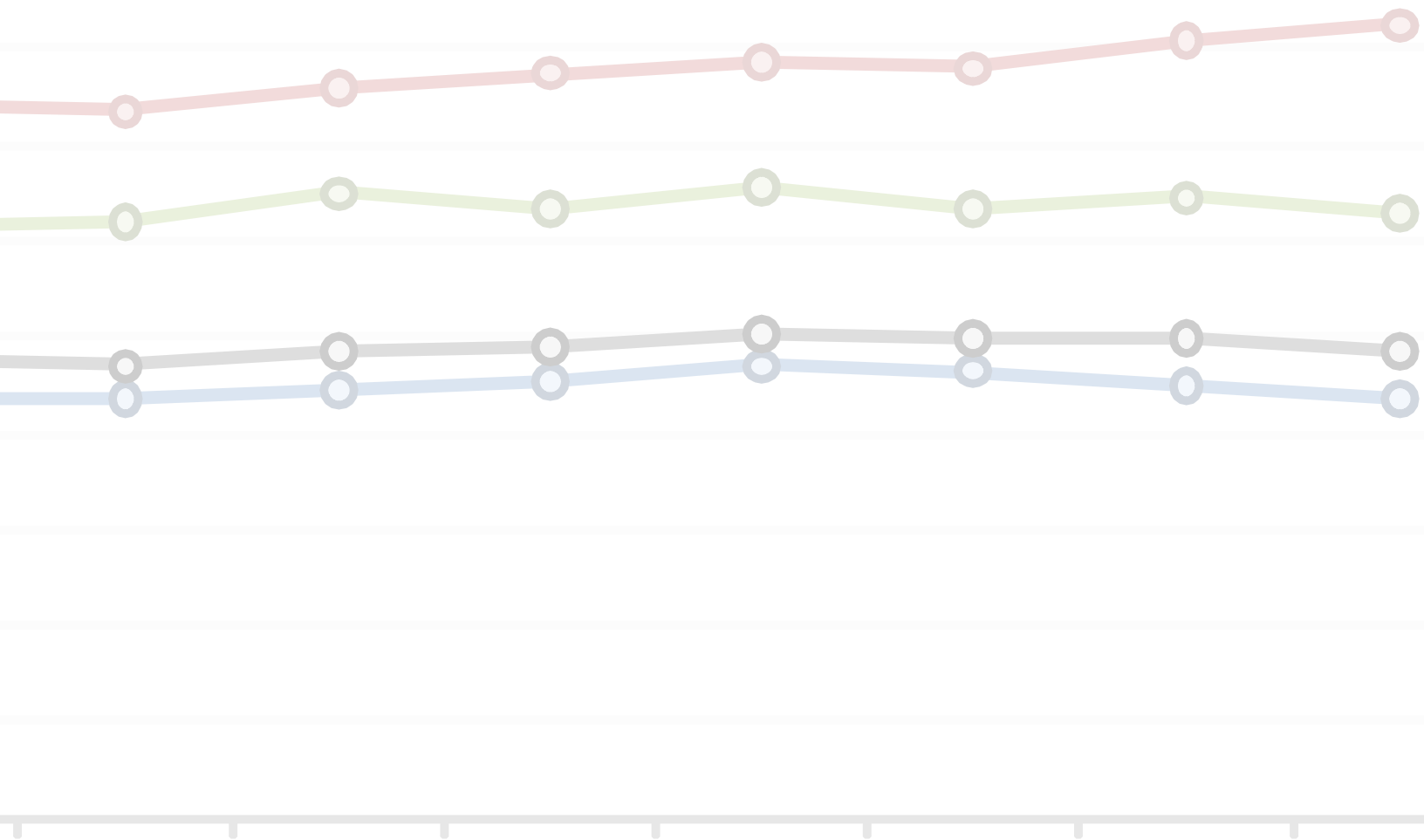




OCTOBER 2010

# RACE-RECOVERY INDEX

## IS STIMULUS HELPING COMMUNITIES IN CRISIS?



KIRWAN INSTITUTE

FOR THE STUDY OF RACE AND ETHNICITY

THE OHIO STATE UNIVERSITY

**john a. powell**  
*Executive Director*

**Andrew Grant-Thomas**  
*Deputy Director*

.....

## KIRWAN INSTITUTE

*The Kirwan Institute for the Study of Race and Ethnicity is a university-wide interdisciplinary research institute. We generate and support innovative analyses that improve understanding of the dynamics that underlie racial marginality and undermine full and fair democratic practices throughout Ohio, the United States, and the global community. Responsive to real-world needs, our work informs policies and practices that produce equitable changes in those dynamics.*

.....

.....

## STAFF CONTRIBUTORS

**Keischa Irons**, *Research Assistant*

**Matthew Martin**, *GIS/Planning Specialist*

**Kathy Baird**, *Director of Communications*

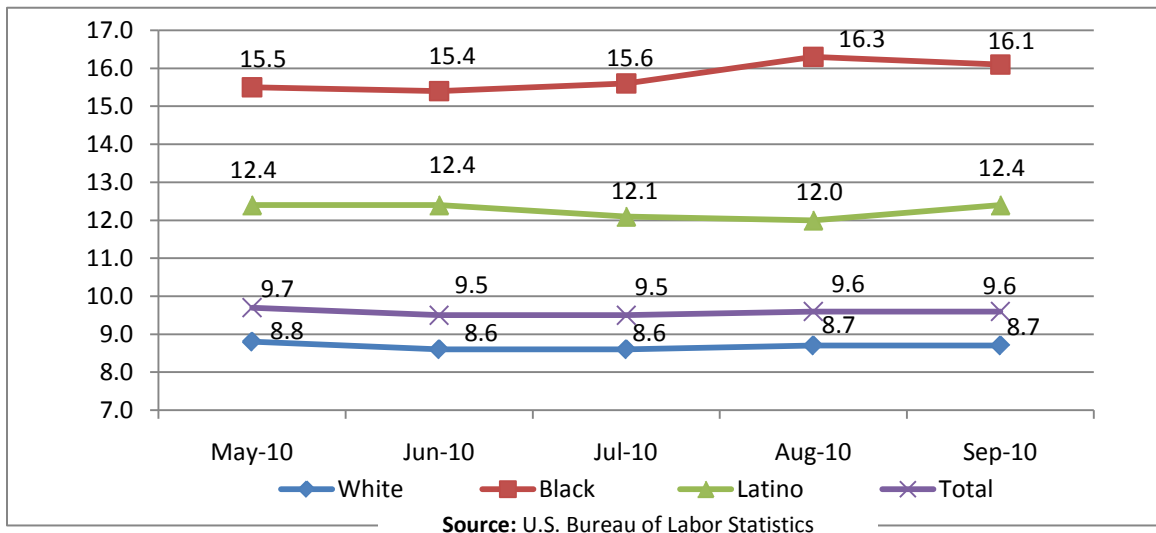
.....



## NATIONAL UNEMPLOYMENT

In September, the overall economy lost 95,000 non-farm jobs and the unemployment rate was unchanged from the previous month at 9.6 percent. Unemployment rates for the Latino population increased by 0.4 points of a percentage, while White unemployment remained about the same for the past four months, from June to September 2010 (see **Chart 1**). Over the past year (September 2009 – September 2010) Black unemployment has risen by 5.9 percent, while Latino and White unemployment have fallen by 0.3 and 4.1 percent, respectively (see **Table 1**).

**Chart 1. U.S. Unemployment Rate by Race: April 2010- September 2010**



**Table 1. U.S. Unemployed (in thousands) by Race**

Race	Sep-09	Oct-09	Nov-09	Dec-09	Jan-10	Feb-10	Mar-10	Apr-10	May-10	Jun-10	Jul-10	Aug-10	Sep-10	% Change (year over year)	Unemployment Increase
White	11,366	11,813	11,589	11,266	10,782	10,982	10,945	11,295	11,070	10,797	10,760	10,893	10,904	-4.1%	-462
Black	2,701	2,754	2,757	2,843	2,929	2,812	2,951	2,966	2,794	2,732	2,755	2,911	2,860	5.9%	159
Latino	2,849	2,939	2,872	2,891	2,848	2,800	2,859	2,834	2,836	2,820	2,751	2,726	2,840	-0.3%	-9
<b>Total</b>	<b>15,159</b>	<b>15,612</b>	<b>15,340</b>	<b>15,267</b>	<b>14,837</b>	<b>14,871</b>	<b>15,005</b>	<b>15,260</b>	<b>14,973</b>	<b>14,623</b>	<b>14,599</b>	<b>14,860</b>	<b>14,767</b>	<b>-2.6%</b>	<b>-392</b>

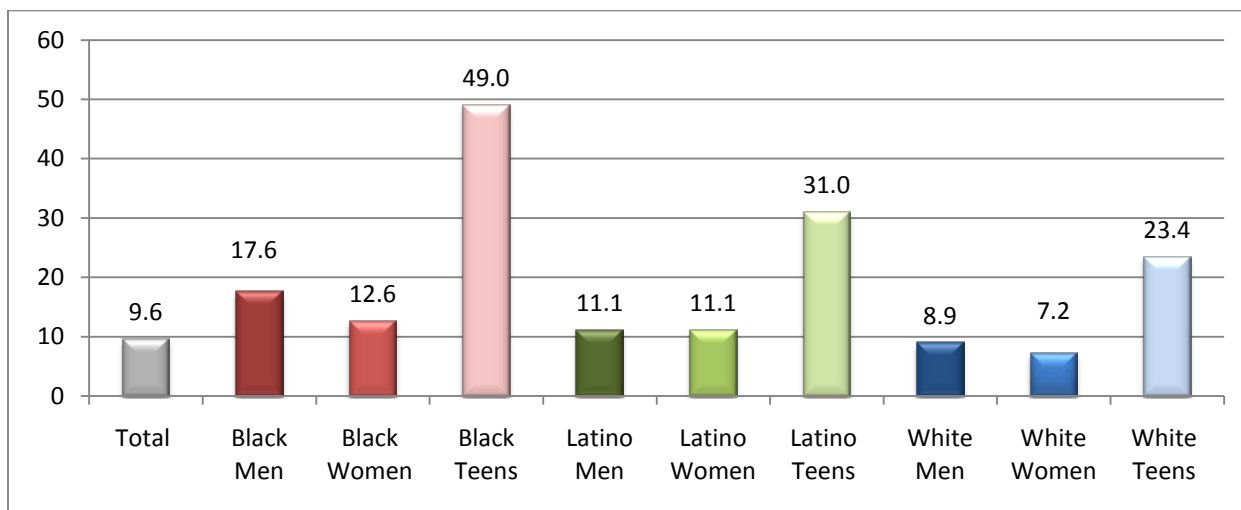
Source: U.S. Bureau of Labor Statistics



## UNEMPLOYMENT BY RACE, GENDER AND AGE

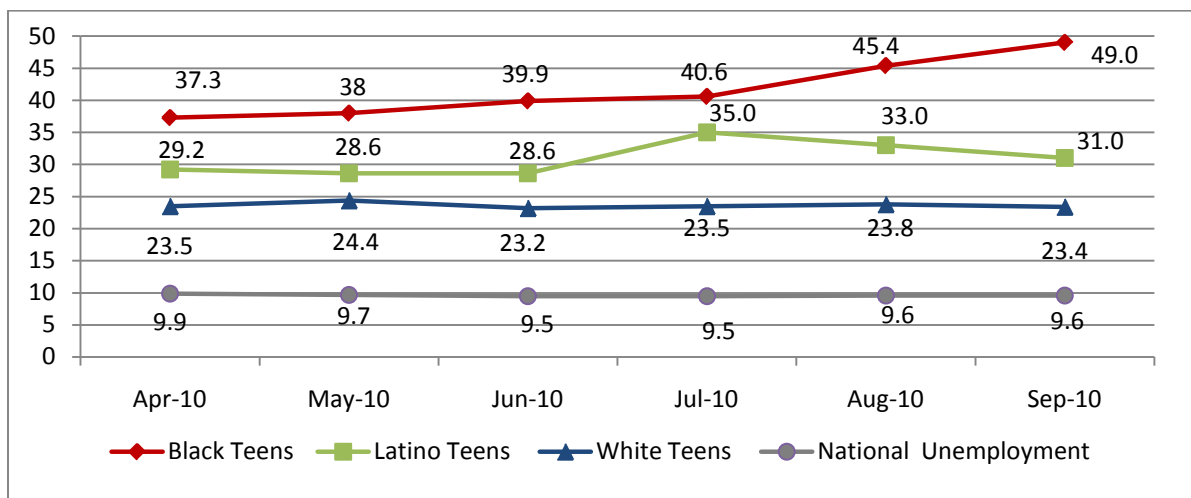
September data from the U.S. Bureau of Labor Statistics shows a disproportionately higher unemployment rate for teens ages 16 to 19 compared to the 20+ age group. **Chart 2** shows this disparity in unemployment rates by race, by gender, and by age. **Chart 3** shows a breakdown of teen unemployment rates from April 2010 to September 2010. Notice that Black teens have experienced an overall increase of 11.7 percent in unemployment rate from April 2010-September 2010.

**Chart 2. U.S. Unemployment Rates by Race, Gender and Age for September 2010**



Source: U.S. Bureau of Labor Statistics

**Chart 3. U.S. Teen Unemployment Rates by Race from April 2010 to September 2010**



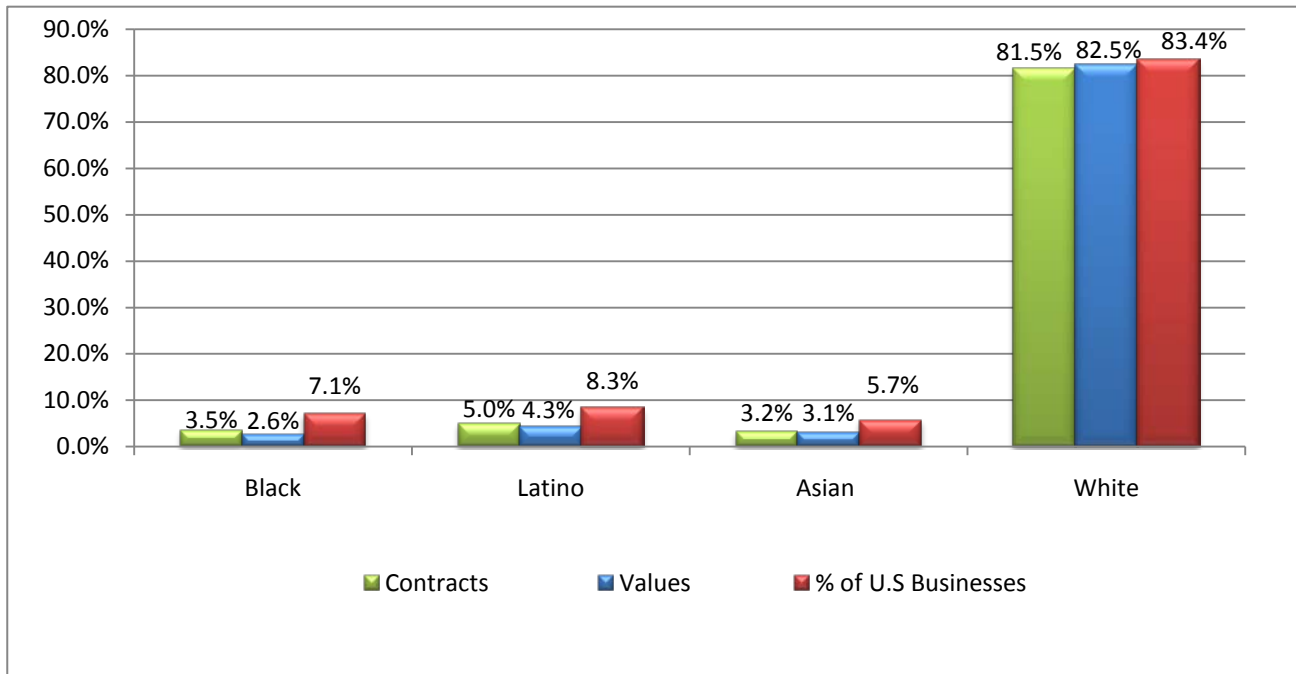
Source: U.S. Bureau of Labor Statistics



## FEDERAL ARRA CONTRACT PROCUREMENT

Tracking stimulus contracts allocated to business owners by race is one method to measure the equity of America's Recovery. The aggregate total of contracts and contract values received by non-White-owned businesses continues to fall below their share of the U.S. market, as measured by the 2007 Economic Census. (See **Chart 4**.)

**Chart 4. Federal ARRA Contract Procurements by Race of Recipient Business Owner (Feb 09- Sept 10)**



**Source:** Federal Procurement Data System (9/2/2010), 2007 U.S. Economic Census Survey of Business Owners

---

## RACE-RECOVERY INDEX

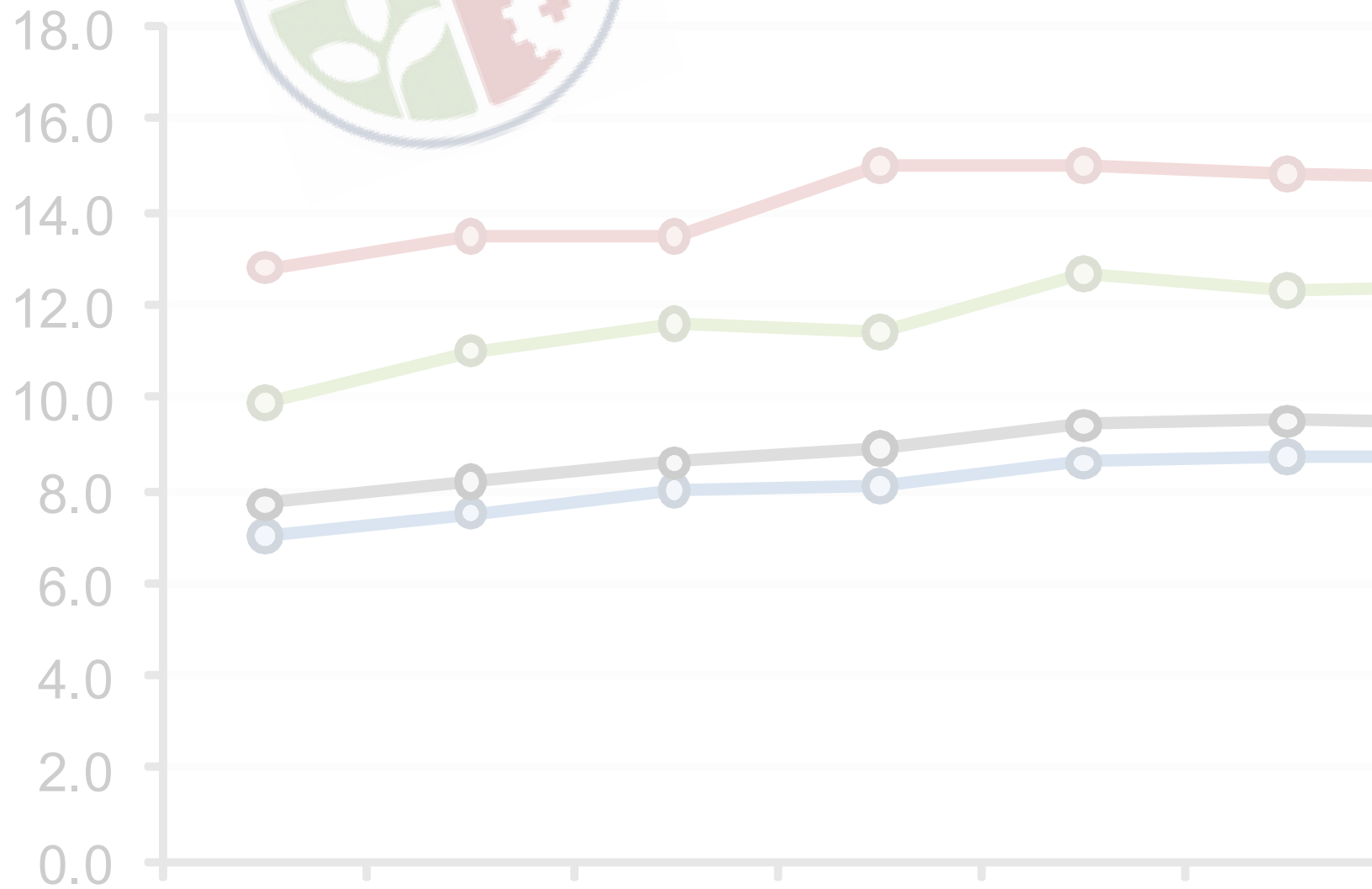
*The Race-Recovery Index, a project of the Kirwan Institute, is designed to measure how all people, but particularly marginalized populations, are faring in the midst of the national recovery efforts. The two primary tools for measurement used on a monthly basis are the national unemployment figures by race, and the Federal contract procurement of the American Recovery and Reinvestment Act of 2009 (ARRA). Additional forms of measurement may eventually be added.*

*For more information, please visit:*

*[www.fairrecovery.org](http://www.fairrecovery.org)*

**FairRecovery.org**

---



**KIRWAN INSTITUTE FOR THE STUDY OF RACE AND ETHNICITY**

THE OHIO STATE UNIVERSITY

433 MENDENHALL LABORATORY | 125 SOUTH OVAL MALL | COLUMBUS OH 43210

Ph: 614.688.5429 | Fax: 614.688.5592

Website: [www.kirwaninstitute.org](http://www.kirwaninstitute.org)